



Public Address - Voice Alarm

Audio Distribution over IP

Commercial Audio

Loudspeakers



IDA8

**Highly Integrated
Secure PA/VA Network System**

DELIVERING YOUR MESSAGE

IDA8

Highly Integrated Secure PA/VA Network System

PROCESSORS

ATEIS proudly introduces a highly integrated PA/VA system which has all the essential functionality to comply with EN54-16 and UL60065 requirements.

The IDA8 system offers a fully digital and networked PA/VA system with adjustable parameters within the digital domain. The IDA8C controller consists of an 8 input by 8 output networked control for the use in any installation size, whether is a small local system of 256 zones or a big complex multi-zone and multi-input system of 8,192 zones. All these functions are present within the main matrix to ensure high quality of audio production required at different ambient environment and sites.

IDA8C has four monitored paging microphone inputs, nine monitored EVAC inputs, eight contact outputs, and is capable of connecting up to eight monitored amplifiers and two backup amplifiers. Each speaker line zone is with A/B line detection per line according to BS 5839 part 8.

The IDA8 system has network redundancy on many levels, including the local/global network redundancy, back-up amplifier switching/sharing, system unit back-up redundancy in cases of the controller or amplifier breaks down. All these features provide the most high level of full-redundancy and offers a complete real-time monitoring to ensure a secured installation. Ethernet communications shall be utilized for software control, configuration, and DSP distribution.

Flexible use of network card, CAT5/6 or fibre (multi or single mode). Each multi-unit application shall feature a fully redundant network configuration with less than 0.02ms latency between units.



IDA8C



Networkable PA/VA System Controller – Matrix Mode

IDA8SAB



Networkable PA/VA System Slave Unit – A/B-zoning – Matrix Mode

IDA8S



Networkable PA/VA System Slave Unit – Matrix Mode

IDA8SL



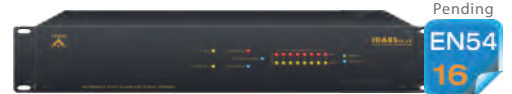
Networkable PA/VA System Lo-Z Slave Unit – Matrix Mode

IDA8C-SW



Networkable PA/VA System Controller – Switch Mode

IDA8SAB-SW



Networkable PA/VA System Slave Unit - Switch Mode

PPM-AS

Desktop Paging Console



REMOTES

PSS-AS

Colour Touch Screen Paging Console



URC - Programmable Remote Controller

URC-200 - Ethernet Programmable Remote Controller

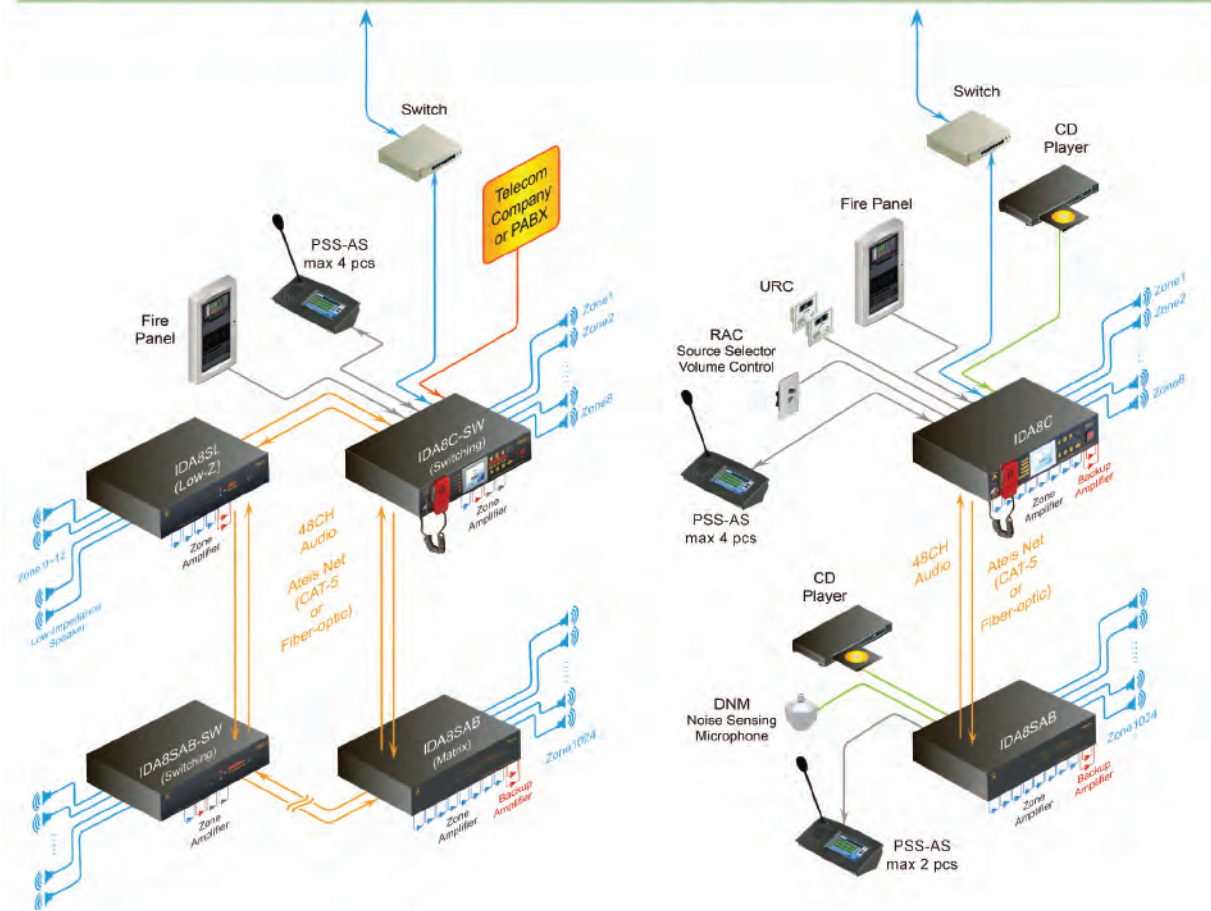
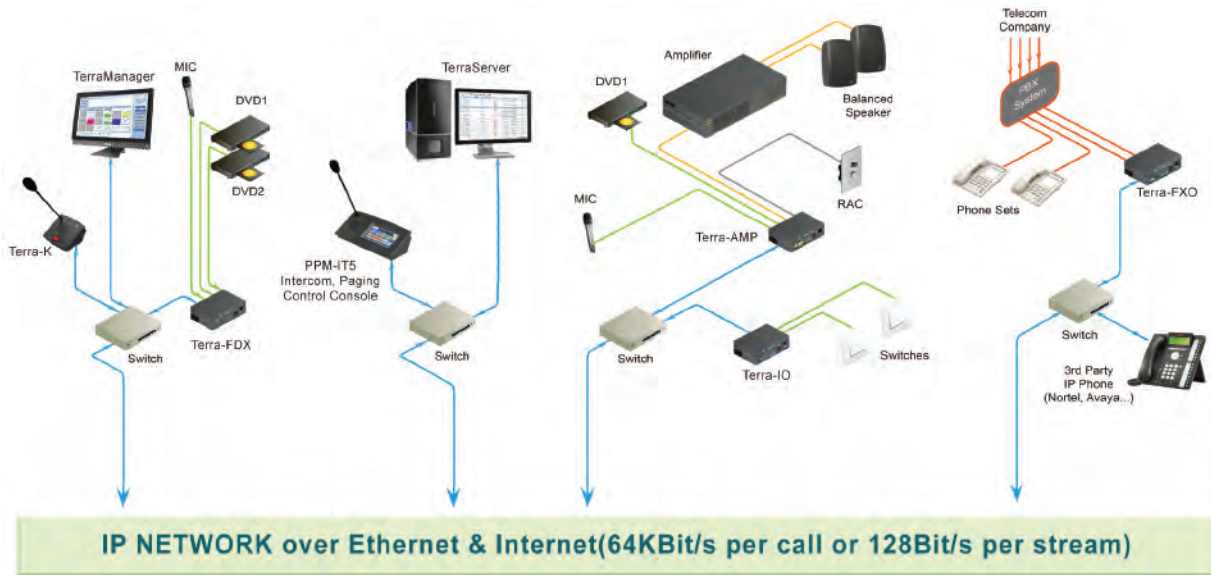


CD-Touch

Wall-Mounted Touch Screen Paging Console



APPLICATION EXAMPLE



AMPLIFIERS



SPA SPA2120/SPA2240
24VDC Backup Security Power Amplifier



DPA DPA8060/DPA4125/DPA4250/DPA2500
48VDC Class-D Backup Digital Power Amplifier



BPA BPA-4060/BPA-2060/BPA-2120/BPA-2240
BPA-2480/BPA-1480/BPA-1000
48VDC Backup Bridging Power Amplifier

REDUNDANCY SWITCHING UNIT



RU-Main
Digital Audio Processing Unit with Paging Console Interface

RU-CTL
Secured Audio IN/OUT Contacts Unit

RU-PDC
Auxiliary Audio IN/OUT Contacts Unit with Paging Console & Telephone Line Interface

ATEIS IDA8 RU-series are designed to provide the reliability of high level of full-redundancy and offer a complete real-time monitoring. RU-MAIN device is in charge of auto switching to primary/secondary devices and re-operate for IDA8C controller and IDA8SAB secondary units in case of any emergency occurring. If the primary audio processor is active, all signals from peripheral devices shall be directed to the primary audio processor.

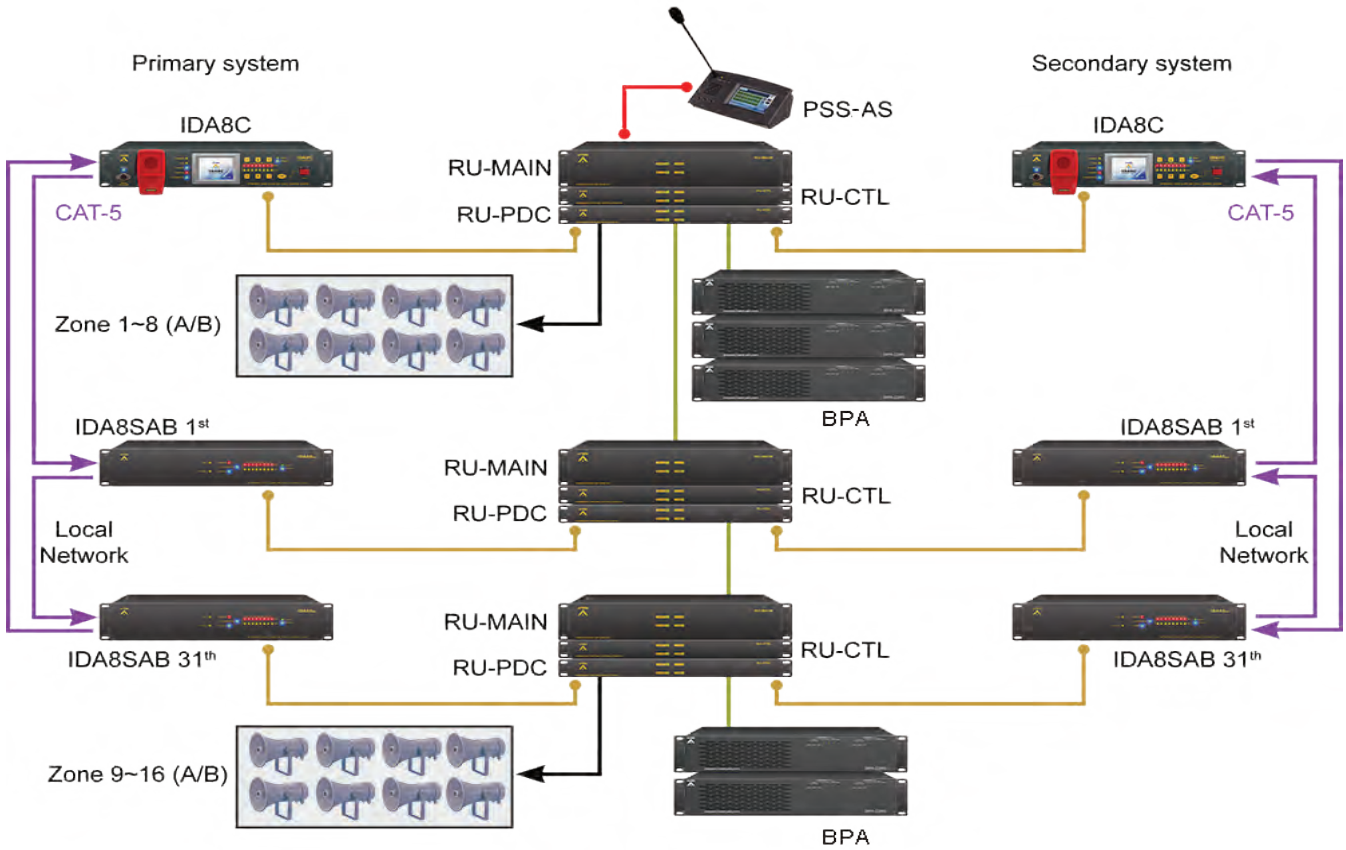
CHARGER UNIT



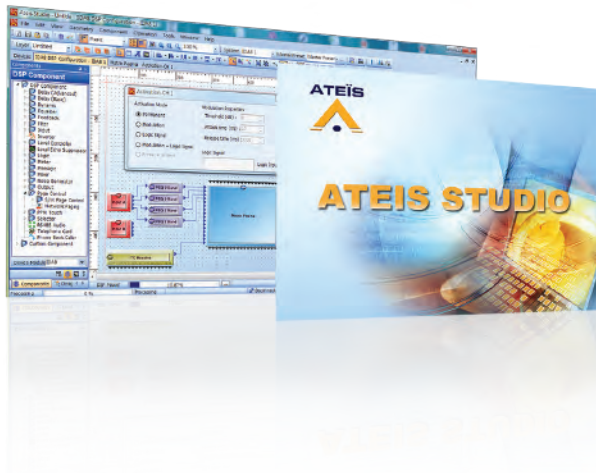
SONAES
Charger & Monitoring Unit

The SONAES charger unit defines a standby time as well as an evacuation time, therefore providing battery backup of a minimum amount of power for a set amount of time.

APPLICATION EXAMPLE
FULL-REDUNDANCY CONFIGURATION



Full support for 100% redundancy and use of watchdog services guarantees maximum system availability with immediate switchover of primary to secondary not only by means of active spare amplifiers but also the control equipment. Should any main equipment fail there is an automatic switchover to the redundant system to ensure uninterrupted operation.



ATEIS STUDIO
DESIGN SOFTWARE

FEATURES

- Up to 48 simultaneous audio channels per local network
- Up to 256 zones in a local network
- Up to 8,192 zones in a global network
- Full digital with 8 audio inputs & 8 audio outputs
- 2 dedicated audio in & outputs for amplifier backup
- 4 dedicated & monitored Peripheral Device Controller ports(PDC) for paging consoles
- 9 supervised control inputs & 8 control outputs
- 1 fault & 1 EVAC relay outputs
- Flexible use of network cards, CAT5-100m & Fibre-20km
- Optional use of audio cards
- 32-bit DSP with superior A/D & D/A conversion
- Internal digital message memory-up to 100 minutes in WAV format (16k 16bit) or 400min in G.722 format
- 4 message players
- Reporting tools with event tools

Flexible

- Dynamic 48 Channel Audio Network
- Full Digital Signal Processing
- Emergency Broadcast
- Powerful & Customized DSP
- Audio Streaming
- Message Playing & Recording
- Priority Control
- VoIP

Reliable

- Full Monitoring & Redundant Backups
- Failure Detection
- EN54-16 Certified

Expandable

- Up to Large Scale Installations

REFERENCE

- Signal Iduna Park, Dortmund Germany
- Burj Al Arab, Dubai, UAE
- Jumeirah Beach Hotel Dubai, UAE
- Union Station Washington, DC, USA

- Central Railway Station, Zürich Switzerland
- Frankfurt am Main Airport, Frankfurt, Germany
- Lyon-Saint Exupéry Airport, Lyon, France
- Stade de France, Paris France



ATEiS Europe B.V.
Europe & Africa
 Celsiusstraat 1 - 2652 XN Lansingerland
 (Rotterdam Region), Netherlands
 Phone: +31 (0)10 2088690 (EMEA)
 Phone: +49 (0)699 675 9193 (Germany)
 info@ateis-europe.com (EMEA)
 Vertrieb@pax-proavgroup.de (Germany)



Penton Audio USA
USA, Canada & Latin America
 21 Sabin Street Pawtucket, RI 02860, USA
 Phone: +1 401-727-1600
 Fax: +1 401-727-0003
 info@penton-usa.com



ATEiS France
 8, rue de l'Europe - ZA de Font Ratel - 38640,
 Claix, France
 Phone: +33 (0)4 76992637
 Fax: +33 (0)4 76992631
 contact@ateis.com



ATEiS China
 Room 610, No.255 Wubao Road, Minxing
 district, Shanghai, China
 Phone: +021-54495191/92
 Fax: +021-54495193
 sales@ateis.com.cn



ATEiS Suisse SA
Switzerland & Southeast Europe
 Avenue des Baumettes 9, 1020 Renens VD,
 Switzerland
 Phone: +41 (0)218812510
 Fax: +41 (0)218812509
 info@ateis.ch



ATEiS Far-East
 2F No.60, Xinghua 2nd Rd. Tanzi,
 Taichung, Taiwan
 Phone: +886 4 25333840
 Fax: +886 4 25333830
 sales@ateis-fareast.com



ATEiS Middle East FZCO.
Middle East & India
 LIU No. 11 , Dubai Silicon Oasis,
 293640 Dubai, United Arab Emirates
 Phone: +971 (4) 3262730
 Fax: +971 (4) 3262731
 info@ateis.ae



ATEiS SE PTE. LTD.
South-East Asia
 Blk 5002 Ang Mo Kio Ave 5, #03-01B TECHplace
 II, Singapore 569871
 Phone: +65 6481 1968
 Fax: +65 6481 1960
 info@ateis-se.com.sg

